

DRAFT SECTION 7.11 CONTRIBUTION PLAN & TECHNICAL DOCUMENT

NOTE: ERROR IN THE DRAFT SECTION 7.11 CONTRIBUTION PLAN & TECHNICAL DOCUMENT

In these documents District Park 2 is shown with a proposed zoning of RE1 Public Recreation (See Figure 1 below marked in red). This is a drafting error.

District Park 2 is proposed to be zoned as C2 Environmental Conservation. The proposed zoning map for Glenmore Park Stage 3 forms part of the exhibition material as an appendix (Appendix 1) to the Planning Proposal. An extract of the rezoning area is shown below at Figure 2 showing the correct zone for District Park 2 being C2 Environmental Conservation.

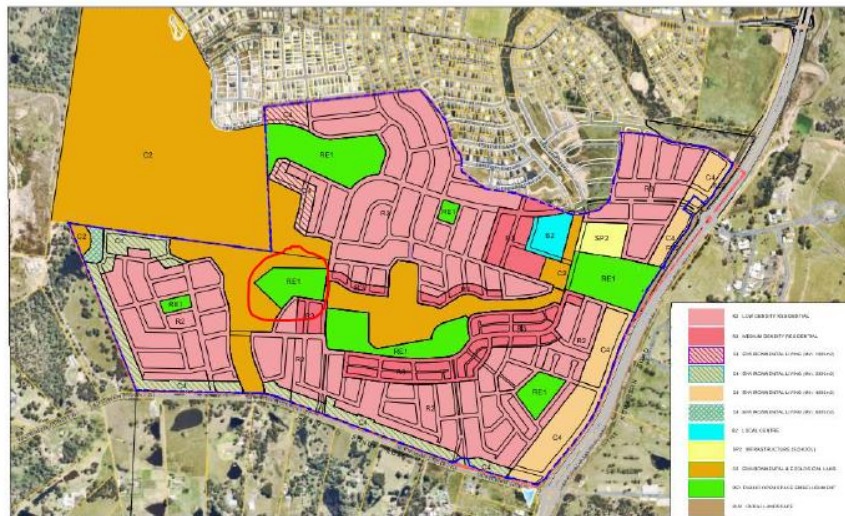


Figure 1 – Extract from Draft 7.11 Contributions Plan

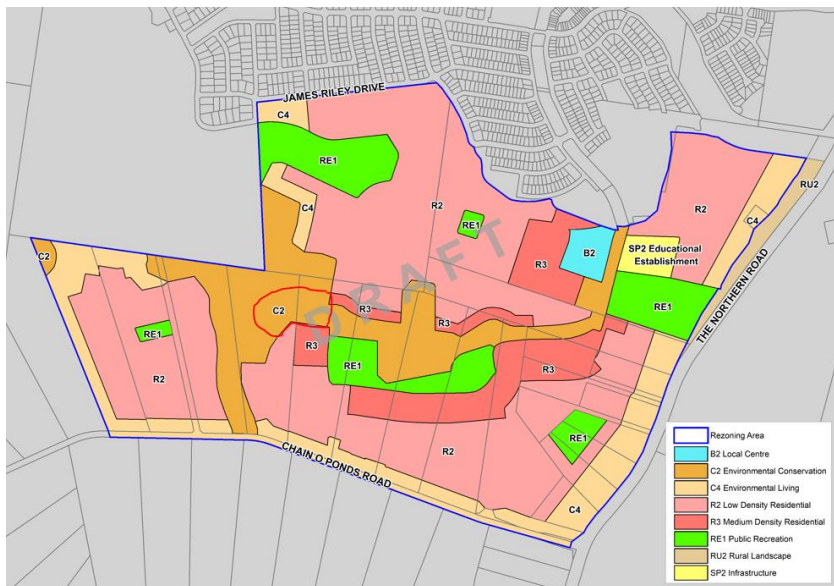


Figure 2 – Extract proposed land zoning map for Glenmore Park Stage 3.